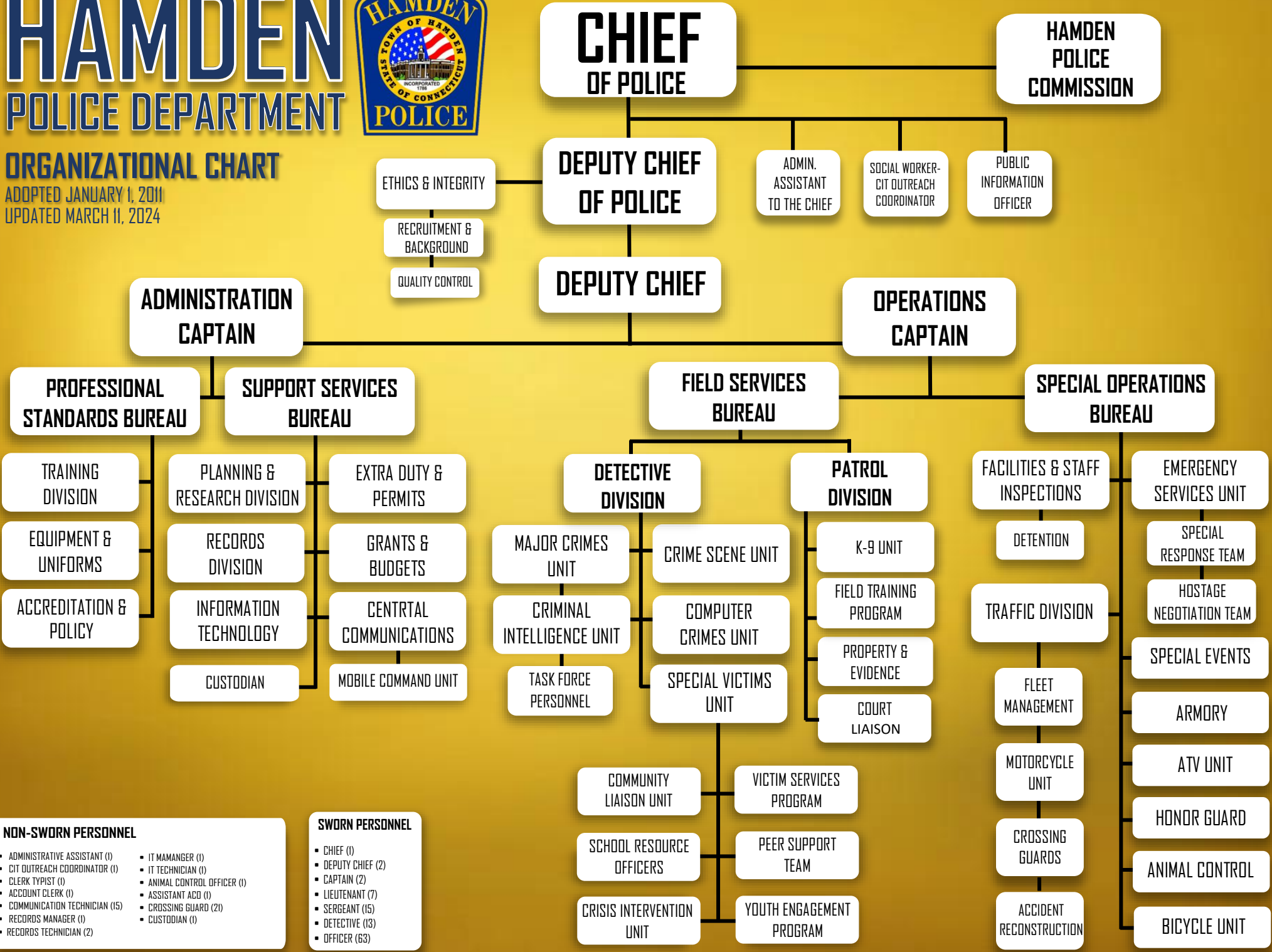


HAMDEN POLICE DEPARTMENT



ORGANIZATIONAL CHART

ADOPTED JANUARY 1, 2011
 UPDATED MARCH 11, 2024



- NON-SWORN PERSONNEL**
- ADMINISTRATIVE ASSISTANT (1)
 - CIT OUTREACH COORDINATOR (1)
 - CLERK TYPIST (1)
 - ACCOUNT CLERK (1)
 - COMMUNICATION TECHNICIAN (15)
 - RECORDS MANAGER (1)
 - RECORDS TECHNICIAN (2)
 - IT MANAGER (1)
 - IT TECHNICIAN (1)
 - ANIMAL CONTROL OFFICER (1)
 - ASSISTANT ACO (1)
 - CROSSING GUARD (21)
 - CUSTODIAN (1)

- SWORN PERSONNEL**
- CHIEF (1)
 - DEPUTY CHIEF (2)
 - CAPTAIN (2)
 - LIEUTENANT (7)
 - SERGEANT (15)
 - DETECTIVE (13)
 - OFFICER (63)